

Methodological Issues of Quantitative Monitoring

Mgr. Ondřej Vítek, Ph.D.

October 24th, ViMoMa, Křtiny, CZ



Methodology

- „Leave it to the data/equipment provider. Trust them.“
- 2 providers: differences
- Best available **quality**
- Results **understandable** for staff
- Described in **detail** (contract closing price)
- **Performable**, not rising the price
- **Reviseable** at the end of a contract



Calibration

- Calibration coefficient
- $C_c = N_o / N_c$ (N_o number observed, N_c number counted)

	Date 1	Date 2	total
Observation	143	48	191
Counter	109	52	161
Calibration coefficient	1,31	0,92	w. 1,19 a. 1,12

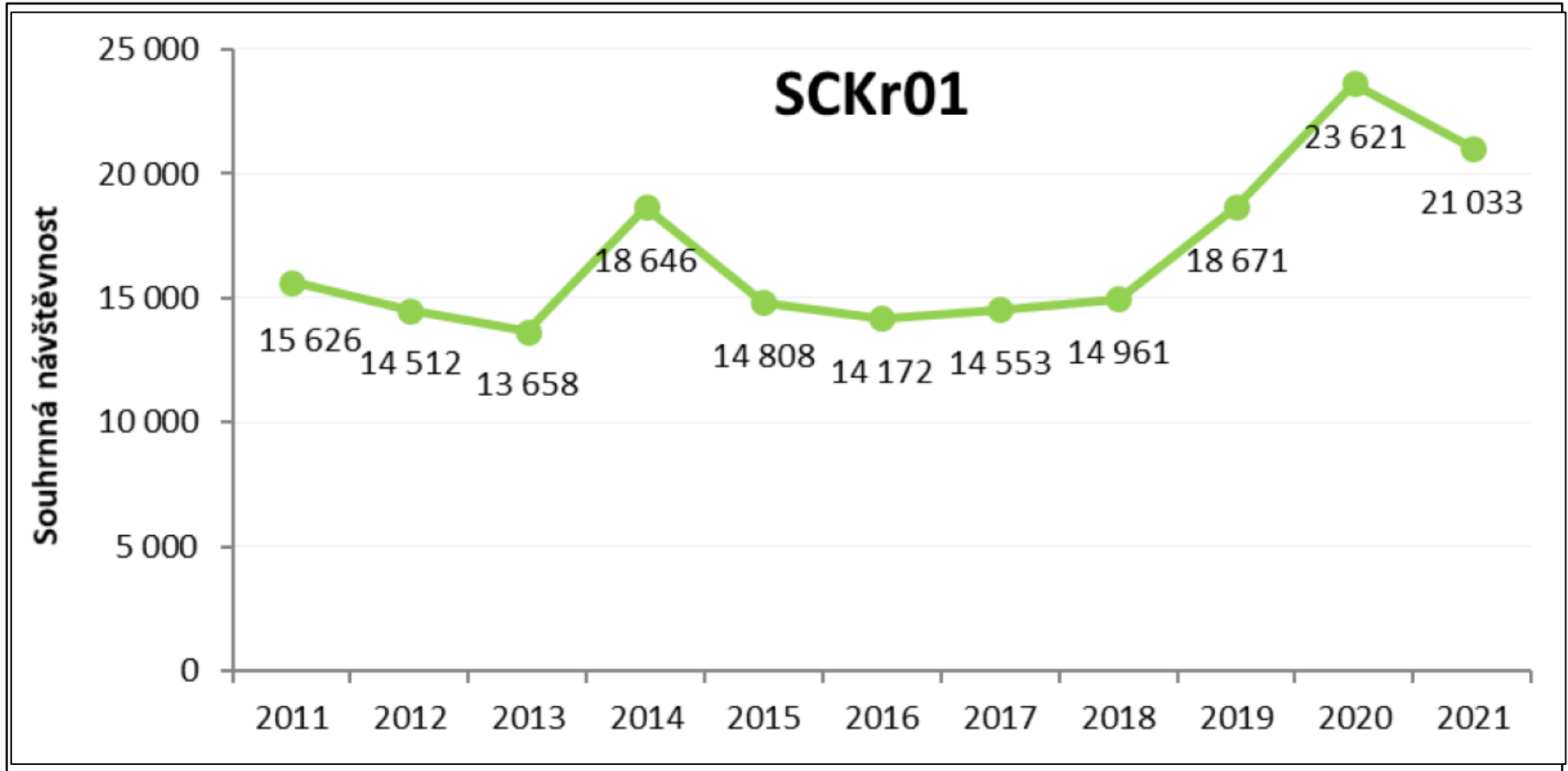


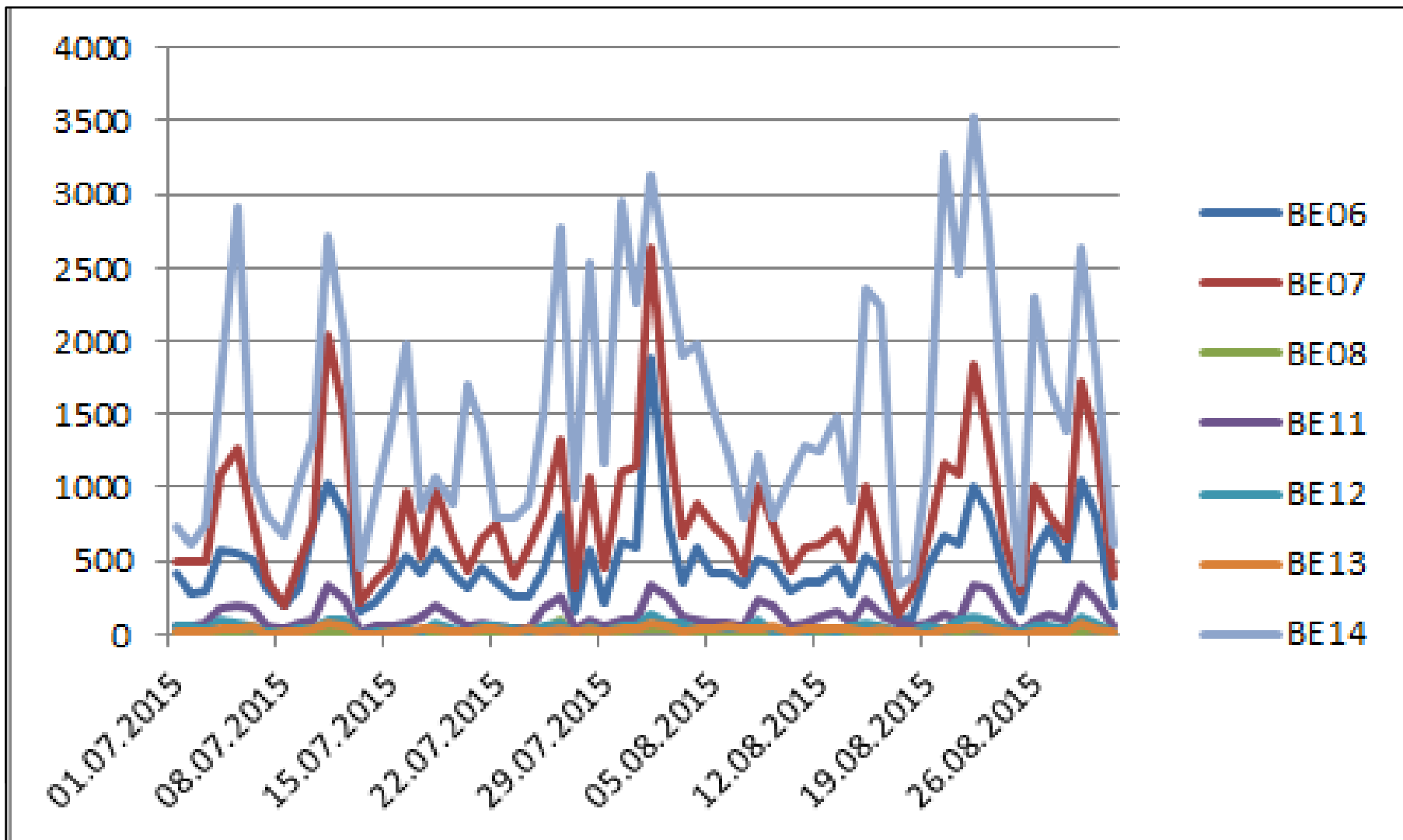
Calibration

- How many hours/days?
- Repeat?
- Workday, or weekend?
- High, low, or average season?
- Where to observe?
- Record also another data?
- What to do with „0“?
- Perform on trails with very low numbers?



Failure periods





Contract period

Administratively easiest way: January 1st – December 31st, causes:

- Contractor can change each year
- Dataloggers under snow
- Busy time at the end of contract period



Discussion, questions



Carrying Capacity and Limits of Protected Areas

Mgr. Ondřej Vitek, Ph.D.

October 24th, ViMoMa, Křtiny, CZ





Carrying Capacity

- Which natural phenomena could be affected by visitors?
- How can we measure the impact?





Po Vltavě ze Soumarského Mostu do Pěkné



O vaší cestě

Splouvání tohoto úseku Vltavy podléhá registračnímu systému. Vstup do registračního systému splouvání Vltavy najdete níže.

Délka 17km	Náročnost střední	Doba 4h
----------------------	-----------------------------	-------------------



Discussion, questions

